



Midia Gas Development Project

Livelihood Restoration Report

Black Sea Oil & Gas SA

Document Number: MGD-E-BSOG-EN-REP4-002-D01

Rev	Date	Description	Issued By	Checked By	Approved By
D01	24.02.2022		Green Partners	A.M. Pericleanu	M. Beacom

Contents

1. THE CONTEXT OF THE LIVELIHOOD RESTORATION REPORT	4
2. PROJECT STATUS	8
2.1. Brief Project presentation.....	8
2.2. Current project status	10
3. LRF COMPLIANCE	12
4. CONCLUSIONS AND RECOMMENDATIONS	20
ANNEX 1 – Grievance register extract	21
ANNEX 2 – Landowners registry	22
ANNEX 3 – Tourist monitoring performed by BSOG	32
ANNEX 4 – Stakeholder Engagement Activities and Media Monitoring	35
ANNEX 5 – Interview with the owner of the beach restaurant in Vadu – Minutes of the Meeting	40
Annex 6 – Interviews with PAPs during the February 2022 site visit.....	42

Table of images:

Overall Schematic of the Midia Gas Development Project.....	8
HDD construction site layout (source: Google Earth and MGD-E-GSPOS009-CN-DLP3-001-B2 Jobsite Layout)	11

Abbreviations

BSOG – Black Sea Oil and Gas

DDBRA – Danube Delta Biosphere Reserve Administration

EBRD – European Bank for Reconstruction and Development

IESC - Independent Environmental and Social Consultant

IFC - International Finance Corporation

LRF – Livelihood Restoration Framework

LRP – Livelihood Restoration Plan

LRR - Livelihood Restoration Report

PAP – Project Affected Person

1. THE CONTEXT OF THE LIVELIHOOD RESTORATION REPORT

According to the Project Environmental and Social Impact Assessment (ESIA) finalized in 2019, any potential Project livelihood impacts (in case any occur) would be associated with the beach crossing construction activities performed during the touristic season. Further, based on the Project schedule at the time, the ESIA determined that no livelihoods would be affected as the beach crossing construction activities were planned outside the touristic season. A Livelihood Restoration Framework (LRF) was however developed as a precautionary measure to address any situations of economic displacement to potentially occur in case of Project schedule changes resulting in construction activities being performed nearby Vadu Beach during the touristic season.

According to the LRF, in such situation, a Livelihood Restoration Plan (LRP) is to be developed and implemented to address any livelihoods impact on the touristic and fishing activities and on a local restaurant located on the beach, at approximately 250 m from the MGD Project Beach Crossing construction site.

Changes in the Project construction schedule resulted in the execution of construction works related to the beach crossing partly overlapping with the tourist season. In particular, the HDD site preparatory activities initiated at end of June 2020 and continued until early September 2020. Actual HDD drilling and pipe installation works were however performed between 11 September and 8 October 2020, i.e. mostly after the end of the touristic season (2020 touristic season at Vadu Beach started late, at 1st of June and ended in 15th of September).

At the time of the elaboration of this report, the construction work on the onshore pipeline has been completed and the affected land has been reinstated as can be observed in the images below.



Image 1 Reinstated pipeline corridor



Image 2 Reinstated pipeline corridor - aerial view

Given the above, the requirement to develop and implement adequate livelihood restoration planning measures was triggered. However, circumstances beyond BSOG control and mainly triggered by the restrictions imposed as result of the COVID-19 outbreak, prevented the development and implementation of an LRP due to the following:

- The lockdown including strict travel restrictions and social distancing measures did not allow the development of an LRP upfront of the initiation of the preparatory works at the beach crossing area (also referred to as “the HDD site” throughout the document). Hence the need for an alternative approach allowing adequate response to a constantly changing course of events.
- The evolution of the touristic season was unpredictable and consequently the full impacts of the Project on tourism were unknown and could not be evaluated before the initiation of the Project works at the beach area.

In this context, to ensure that the commitment to compensate for any Project-induced loss of income or for Project-induced loss of other means of livelihood is attained, a number of measures were undertaken as indicated below.

An Assessment of potential economic displacement situations was initially developed with the following objectives:

- assess the potential economic displacement aspects identified in the LRF;
- identify all potential economic displacement situations related to the MGD Project considering the new construction schedule;
- identify/update the Project-affected persons/groups (PAP), and
- define required measures to address potential social impacts experienced by the PAPs in line with national requirements, LRF, EBRD PR5 and IFC PS5.

The assessment resulted in the identification of a number of actions that needed to be implemented by BSOG during the construction works executed during the touristic season as follows:

- the social impacts associated with the Project activities developed during the touristic season to be monitored;
- all impacts and their magnitude to be documented;
- additional data to be acquired based on consultations with PAPs from the two categories of economic displacement situations:
 - owner of restaurant - Cherhanaua Bosoancă, and
 - owners/users of land situated in the proximity of roads and land used for the Project.

In addition to the above, BSOG monitored and documented the following indicators:

- Touristic activity on the beach section in the proximity of the construction works;
- Grievances submitted by PAPs - tourists, landowners/users or other interested parties;
- Mass media and social media coverage on Project and particularly on impacts on the beach.

Monthly reports on social impacts associated with BSOG activity with a special focus on economic displacement situations were developed as well. These monthly reports documented all the activities performed by BSOG, the progress in implementation of the measures proposed in the socio-economic assessment, the outcomes of the consultation process with PAPs, updates on grievances received related to potential livelihood restoration issues.

This Livelihood Restoration Report (LRR) represents the outcome of the assessment of Project compliance with LRF requirements at the end of the beach crossing-related construction and the pipeline. It provides an overview of the actions performed by BSOG and explains how the livelihood restoration measures have been implemented, documented and acknowledged.

The current report covers the timeframe up to 21.02.2022. The following documents have been consulted:

- Monthly reports;
- Grievance register;
- Mass-media Project coverage;

- Information materials;
- CLO reports;
- Beach and village surveys;
- Landowners register and maps
- IESC (Independent Environmental and Social Consultant) monitoring reports.

For the finalization of the report, a site visit has been performed in Vadu, where meetings have been carried out with the local authorities, owners of the restaurants situated near and on the Vadu beach, the owner of the Milexim reed harvesting company and landowners that are neighboring the pipeline corridor and the access roads to the site. The minutes of the meetings from the discussion can be found in Annex 6.

2. PROJECT STATUS

2.1. Brief Project presentation

The main Project components are illustrated and briefly presented below:

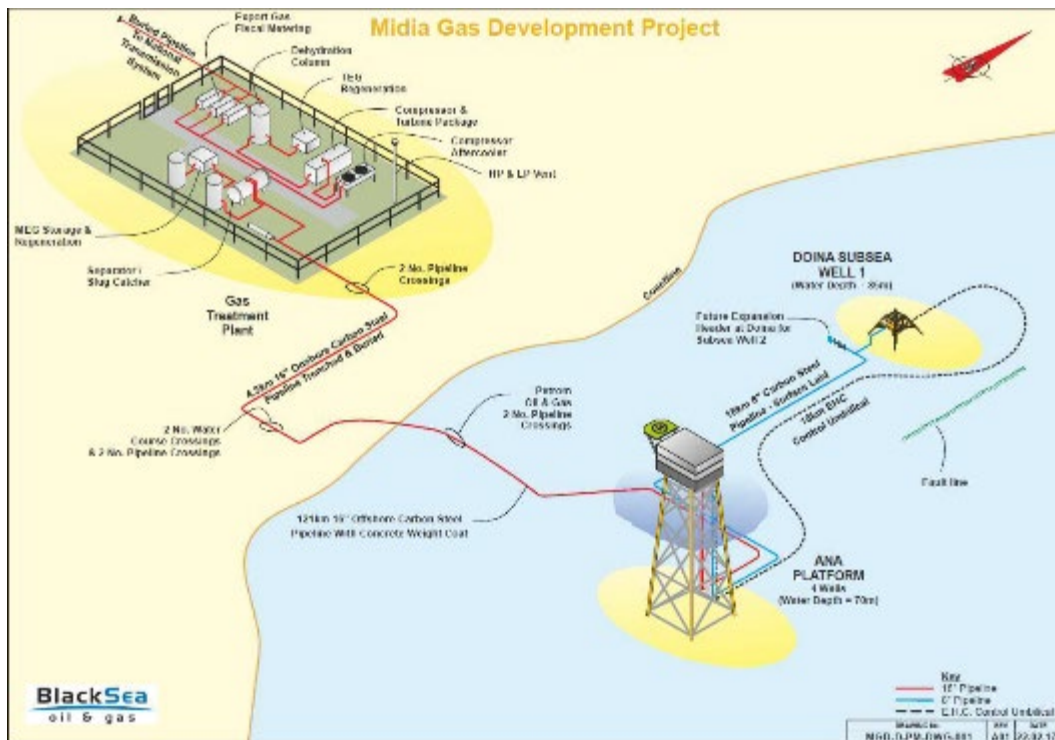


Image 3 Overall Schematic of the Midia Gas Development Project

Ana Offshore Installation (Ana Platform)

- Ana Platform will be a small, normally unmanned installation (NUI), hosting four wells, 109 km from shore. The jacket will be a 4-legged, x-braced steel structure with one pile per leg, attached via skirts. Mud-mats will also be installed in order to provide stability and assist in offshore installation.
- The platform will receive production from the Doina subsea production system and mix it with Ana production prior to routing the combined production fluids to the Ana to GTP subsea pipeline.
- The topsides will host production support facilities for the Ana and Doina fields, including diesel driven power generators, cold vent, chemical storage and injection pumps for MEG / corrosion inhibitor (CI), temporary refuge, local equipment room, lifeboat, facilities to enable temporary installation of pig receivers and launchers, crane, a helideck, control and safety systems, telecommunication system and minimal other facilities.
- The platform is designed to be started up, controlled and shut down from the onshore GTP control room with minimal requirement for intervention by offshore personnel (limited to re-start of the platform following an emergency shutdown and bunkering of fluids to the platform).

Drilling

- Four near vertical wells for Ana in a water depth of 69.5 metres, each terminating at a depth of approximately 1135 metres TVDSS (true vertical depth subsurface),
- One vertical well for Doina in a water depth of 84 metres, terminating at a depth of approximately 1110 metres TVDSS.

Offshore Pipelines and Subsea Facilities

- Doina Subsea consists of one production well and a subsea gas production system (Xmas tree) controlled via an 18 km-long electro-hydraulic-chemical (EHC) umbilical from the Ana Platform. Utilities for the Doina subsea Xmas tree including Electric power, Control signals and hydraulic power are provided via the EHC umbilical between Ana and Doina.
- Doina to Ana infield pipeline: 18 kilometre long, 8-inch carbon steel pipeline from Doina subsea to Ana platform, continuously inhibited against hydrates with monoethylene glycol (MEG) delivered through the umbilical.
- Ana to shore pipeline: 121 kilometre long, 16-inch carbon steel pipeline with concrete coating for stability, continuously inhibited against hydrates with MEG.

GTP and Onshore Pipeline

- Shore crossing: Horizontally directional drilled (HDD) shore crossing.
- Shore to onshore gas treatment plant pipeline: 4.5 km-long, trenched and buried 16-inch carbon steel pipeline, continuously inhibited against hydrates with MEG.

- Onshore gas treatment plant (GTP) with:
 - Pig receiver.
 - Slug catcher/separator.
 - Single stage turbine driven compressor (with scrubber and air-cooled aftercooler).
 - Triethylene glycol (TEG) dehydration of gas.
 - Fiscal export gas metering.
 - Export pig launcher.
 - MEG regeneration and storage.
 - Control room, complete with integrated control and safety system and telecommunications system that enables remote control of offshore facilities.
 - Power generation.
 - Utilities (fuel gas, diesel, instrument air, nitrogen and drains).
 - Fixed firefighting system.
 - Cold vent.

2.2. Current project status

As of February 2022, the following main onshore activities were performed by BSOG and its contractors:

- construction of gas treatment plant (ongoing)
- work related to fabrication of Ana Platform at a site in Agigea shipyard (completed).
- preparation of access road for HDD (completed)
- preparation of the HDD site (completed)
- beach crossing works with HDD (completed)
- HDD site demobilization (completed)
- preparation of access road to onshore pipeline corridor (completed)
- laying out and welding of onshore pipeline (completed).

The impacts of the above-indicated activities have been fully assessed in the Project ESIA package.

The beach crossing works were performed by employing the Horizontal Directional Drilling (HDD) technology and consisted of a series of activities that can be summarized as follows:

- preparatory activities related to access road rehabilitation, construction site arrangement and installation of necessary equipment and machinery
- horizontal drilling
- pipeline pulling into the drilled borehole
- rehabilitation of construction site and access road.

The construction site had a total perimeter of approximately 40 m x 30 m and was located nearby Vadu Beach at 150 m inland from the shoreline, as indicated in the below figure:



Image 4 HDD construction site layout (source: Google Earth and MGD-E-GSPOS009-CN-DLP3-001-B2 Jobsite Layout)

3. LRF COMPLIANCE

The LRF developed in 2019 identified a number of potential impacts that might generate situations of economic displacement for the local community, and which should be granted special attention while the work for the HDD beach crossing is performed. Based on those prior identified impacts, a compliance table has been developed in order to track the progress BSOG has made on these issues and which proposes further mitigation measure, where necessary:

Legend: FC - Fully Compliant; PC - Partially Compliant; NC - Non-Compliant

Type of action	Description	Actions performed	Main findings	Compliance*	Further actions required
Monitor the social impacts	Monitor the social impacts associated with BSOG activity and document all potential impacts.	Monthly reports have been developed in 2020 for assessing the impact of the HDD on tourism in July, August, and a Monthly report covering September and October 2020 based on the template provided in the Report for Assessment of potential economic displacement situations.	Social impacts have been monitored and reported on monthly basis. Further details provided in the following rows.	FC	No further actions required.
Monitor and document indicators	Monitor touristic activity at the beach section situated in the proximity of the construction works. Disclose Project	Flyer and brochure distribution 5 Beach surveys 2 Information boards installed at the HDD site	The surveys indicate that tourists were not disturbed by the presence of the site, nor they perceived any annoying noise from the site, machinery or workers.	FC	No further actions required.

Type of action	Description	Actions performed	Main findings	Compliance*	Further actions required
	information to and engage with tourists.	<p>perimeter</p> <p>Daily (Monday to Friday) reporting on beach occupancy next to HDD site</p> <p>Weekly opinion survey among tourists</p> <p>The outcomes of the touristic activity monitoring are summarized in Annex 3.</p>	<p>No interaction between tourists and workers.</p> <p>No grievances have been received from the tourists.</p> <p>In the 2020 season, Vadu beach became more popular given its generous size allowing social distancing. Record numbers of tourists were reported by the Danube Delta Reserve every weekend of the 2020 summer.</p>		
	Establish a grievance process accessible to PAPs - tourists, landowners/users or other interested parties	<p>Adequate Grievance Mechanism in place.</p> <p>7 Grievance boxes were installed as follows:</p> <ol style="list-style-type: none"> 1. Corbu Mayor House 2. Agigea shipyard 3. GTP 4. Corbu Cultural Center 5. Vadu Cultural Center 6. Vadu beach, near HDD site 7. Vadu Beach, HDD site 	<p>No grievances received from the tourists.</p> <p>2 grievances received from the community in relation to the HDD and pipeline construction works and both addressed and closed by BSOG in line with Grievance Mechanism.</p> <p>2 grievances have been received from a landowner adjacent to the GTP construction site. The first grievance was resolved by</p>	FC (to date)	<p>Grievances monitored and documented until the end of the GTP construction.</p> <p>Follow up and close the second grievance from the landowner adjacent to the GTP.</p>

Type of action	Description	Actions performed	Main findings	Compliance*	Further actions required
		As of now, the Agigea and HDD site boxes have been decommissioned, as work has been finalized.	<p>BSOG, while the second one, which was submitted during the 2022 site visit for the elaboration of this report, is under investigation. Both grievances are in relation to impacts on agricultural land due to the GTP construction.</p> <p>1 Grievance has been received from a reed farmer in the area, which was unable to access the land that was part of his concession from DDBRA (Danube Delta Biosphere Reserve Administration). The farmer has been engaged by BSOG on several occasion and an evaluation of the impacts is to be performed.</p> <p>An excerpt from the grievance log and photograph of the Vadu Beach grievance box can be found in Annex 1.</p>		Follow up with the evaluation on the impacts on the reed crops.
	Project information disclosure to general public.	Information about the HDD operations/project status were posted on BSOG	A large number of flyers and brochures has been distributed to PAPs and tourist. Sample can be found	FC (to date)	Monitor social and mass media until the end of construction in

Type of action	Description	Actions performed	Main findings	Compliance*	Further actions required
	Monitor mass media and social media on Project coverage and particularly on beach crossing-related impacts	<p>LinkedIn.</p> <p>BSOG monitored the social and mass media, and documented any news related to the Vadu Beach touristic activity and the Project.</p> <p>A sample of the Stakeholder engagement activities and media monitoring is documented in Annex 4.</p>	<p>in Annex 4.</p> <p>No news coverage reflecting any negative impacts of the Project on tourism. BSOG has identified some negative feedback from tourist on DDBRA social media page, but no grievances have been received by the Company and the complaints did not present much legitimacy in terms of their claims.</p> <p>Extended media reports on the (high) degree of occupancy of the Vadu Beach, once the COVID restrictions have been lifted.</p>		line with SEP requirements.
Identify the owners/users of land plots adjacent to access road	Identify the owners/users of land situated along the last part of the access road used for the HDD construction site and other roads used for accessing the work corridor for the onshore	BSOG has identified all owners (Annex 2) of the lands situated along the access roads and has developed a map of all the neighboring properties and owners.	One claim pertaining to alleged disturbance of a land plot adjacent to the HDD site access road received by the CLO during Project leaflets distribution in Corbu. According to the Land Registry the land plot owned by the claimant is not located in the proximity of the access road. Response provided to	FC	No further actions required

Type of action	Description	Actions performed	Main findings	Compliance*	Further actions required
	pipeline. Identification of all owners of land plots adjacent to the roads. BSOG will notify, consult, and obtain written agreement from them regarding access / usage to/of their properties, if the road rehabilitation activities encroach on their lands		the reporting party.		
Consult landowners/ land users and owners of the restaurants	Consult the owners of the restaurants in the Vadu beach area (Cherhanaua Bosoanca, Moesia) and, if necessary, establish the compensation level based on settled agreements with each impacted person.	<p>The owner of the Bosoanca restaurant has been engaged by BSOG on several occasions.</p> <p>An attempt has been made to contract the restaurant to provide food for the workers, but an agreement on the price couldn't be reached.</p> <p>BSOG has used the services of the restaurant occasionally and monitored the restaurant occupancy</p>	<p>No grievances have been submitted by the restaurant owner.</p> <p>The restaurant owner has confirmed that BSOG has engaged him several times, nevertheless his attitude towards the Company remains rather hostile. He has also stated that his activity was impacted by the COVID restrictions, as the number of tourists was lower than in past</p>	FC	

Type of action	Description	Actions performed	Main findings	Compliance*	Further actions required
		<p>during the HDD work.</p> <p>The owner of the restaurant has been engaged several times. BSOG has provided information materials and updates regarding the project status.</p> <p>The owner of the restaurant has been interviewed for the LRR purposes to identify and potential impact on the restaurant's activity.</p> <p>The owner of the Moesia restaurant has also been engaged by BSOG, as a result of a newspaper article in which he was complaining about the impacts of heavy traffic on his restaurant.</p> <p>An evaluation committee has been set up at BSOG level, consisting of the BSOG CEO, HR Manager, and Communication & CSR Manager.</p>	<p>years. This contradicts Company's monitoring observations made throughout entire touristic season and the mass media reports which documented the fact that due to international travel restrictions, the seaside has become an even more popular destination for Romanian tourist. Nevertheless, there is however no indication that the HDD work has had any impact on the number of customers of the restaurant.</p> <p>The restaurant owner has complained about the noise level of the HDD drilling during the nighttime, although the HDD works were performed mostly outside the touristic season and the restaurant is closed overnight. This claim also contrasts the feedback received from tourists which indicated no disturbance. The restaurant owner also claimed that the drilling has affected</p>		

Type of action	Description	Actions performed	Main findings	Compliance*	Further actions required
			<p>his water well, yet he did not file any grievance with BSOG, claiming that he doesn't expect anything from the Company. In a follow up call that took place in February 2022, he reiterated his complaint about the well and he stated he will file an official complaint to BSOG. The rest of his family which is also involved in the running of the restaurant, more specifically his brother and his nephew, have not confirmed the impacts on the well and have not raised any grievances towards BSOG, neither in the in person meeting, nor in the subsequent telephone conversations.</p> <p>The Minutes of Meeting documenting those discussed during the call with the Bosoanca restaurant owner are provided in Annex 5.</p> <p>As a follow up to the initial visit from BSOG representatives, the Moesia owner has</p>		

Type of action	Description	Actions performed	Main findings	Compliance*	Further actions required
			confirmed that traffic and the speed at which the trucks were transiting his area have both been reduced, his only issue now is regarding the road rehabilitation that he expects from BSOG.		
	Consult landowners of the land plots adjacent to the pipeline corridor and the access roads to the HDD and pipeline Right-of-Way, and, if necessary, establish the compensation level based on settled agreements with each impacted person.	Landowners have been identified. Several landowners have been contacted in order to assess if any disturbances have occurred.	Based on the responses received from the landowners, no impacts have been identified.	FC	No further actions required

4. CONCLUSIONS AND RECOMMENDATIONS

To date, there are no issues of non-compliance with the recommendations elaborated in the LRF. However, a number of actions are to be further implemented by BSOG, in line with the recommendations from this report, until the finalization of the construction works.

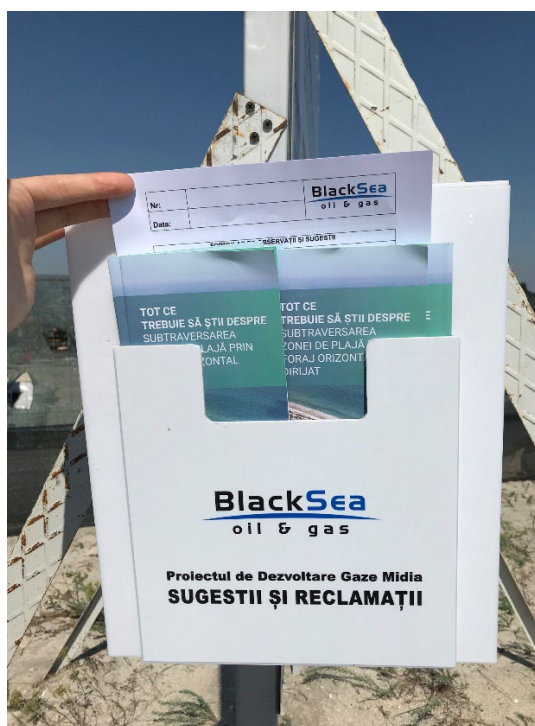
The evaluation committee will assess any potential damages that may arise due to project activities and will address any grievances submitted by the interested parties. The evaluation committee will also analyze the potential impacts and decide if any additional remedial actions are required or not. Based on the findings of this report, the elaboration of a Remedial Action Plan at the end of the construction works will not be required, since, to date, there is only one instance in which compensation might be required and most of the construction work, as well as the reinstatement work, is close to completion. For any further impacts requiring compensation a case-by-case approach will be utilized.

Next steps:

- Monitor grievances until the end of construction.
- Monitor social and mass media until the end of construction in line with SEP requirements
- Follow up with the restaurant owner regarding the alleged potential impact on the water well.
- Follow up with the reed farmer and perform an evaluation of the impacts on the reed crop.

ANNEX 1 – Grievance register extract

NO.	TYPE	DESCRIPTION	RECEIVED VIA	FORM FILLED IN	DATE RECEIVED	RESPONSE PROVIDED	RESPONSE TYPE	REPORT/RESPONSE ISSUED	GRIEVANCE STATUS
BSOG-GRV-04	COMMUNITY	A member from Corbu community wanted to know the impacts of the MGD project on air quality, land and life in general, as the area is quite industrialized. He was concerned that our GTP will impact adversely the life of the community members.	Grievance box	YES	14.02.2020	YES	Letter	05.03.2020	CLOSED
BSOG-GRV-05	COMMUNITY	Farmer whose lands are located in the vicinity of the GTP and whose crops were affected by the works performed by the Contractor when using the dirt road to the GTP.	Verbal	NO	16.12.2019	YES	Agreement	22.07.2020	CLOSED



ANNEX 2 – Landowners registry

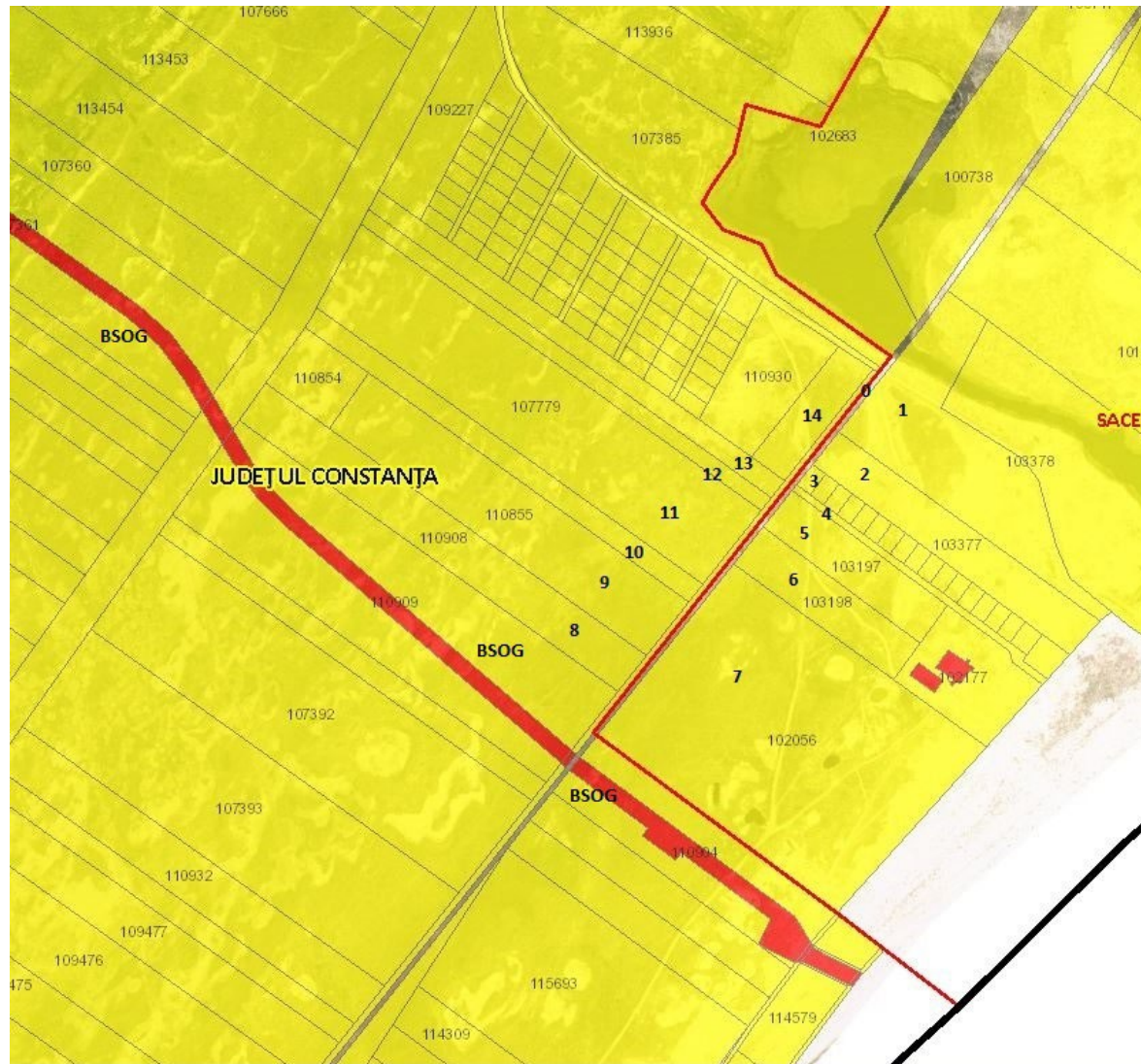
Pipeline Neighbors

NO. CRT.	Cadastral Number	NOTE
1	114579	COM. CORBU
2	111276	COM. CORBU
3	107391	COM. CORBU
4	107422	COM. CORBU ACCESS ROAD BSOG RIGHT OF WAY
5	107362	COM. CORBU
6	107421	COM. CORBU ACCESS ROAD
7	109087	COM. CORBU ACCESS ROAD BSOG RIGHT OF WAY
8	107339	COM. CORBU BSOG RIGHT OF WAY
9	107360	COM. CORBU

10	110908	COM. CORBU NEIGHBOR WITH THE ACCESS ROAD HDD
11	107423	HDD ACCESS ROAD
12	102056	COM. SACELE
13	114610	COM. CORBU PUBLIC DOMAIN BSOG RIGHT OF WAY
14	114676	COM. CORBU PUBLIC DOMAIN BSOG RIGHT OF WAY
15	111401	RENTERS
16	112346	COM. CORBU PRIVAT DOMAIN
17	115894	PUBLIC DOMAIN BSOG RIGHT OF WAY
18	102239	COM. CORBU
19	114117	COM. CORBU

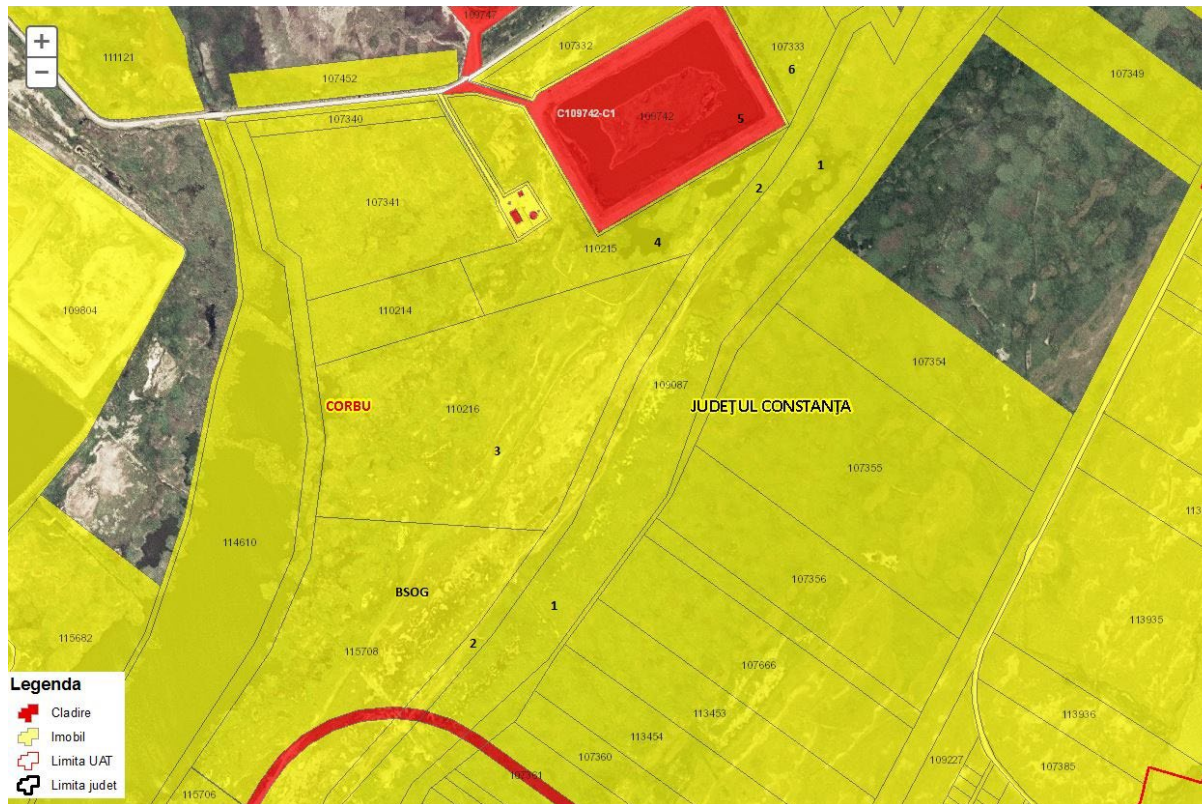
NO. CRT.	CADASTRAL NUMBER	NOTE
-------------	------------------	------

0	107423	HDD ACCESS ROAD
1	103378	COM. SACELE
2	103377	COM. SACELE
3	102195	COM. SACELE
4	102196	COM. SACELE, ACCESS ROAD RESTAURANT MORTGAGE
5	103197	COM. SACELE
6	103198	COM. SACELE
7	102056	COM. SACELE
8	110908	COM. CORBU
9	110855	COM. CORBU
10	107389	COM. CORBU
11	107779	COM. CORBU
12	107780	COM. CORBU
13	107387	COM. CORBU
14	110931	COM. CORBU



Argenta Site Access Neighbors

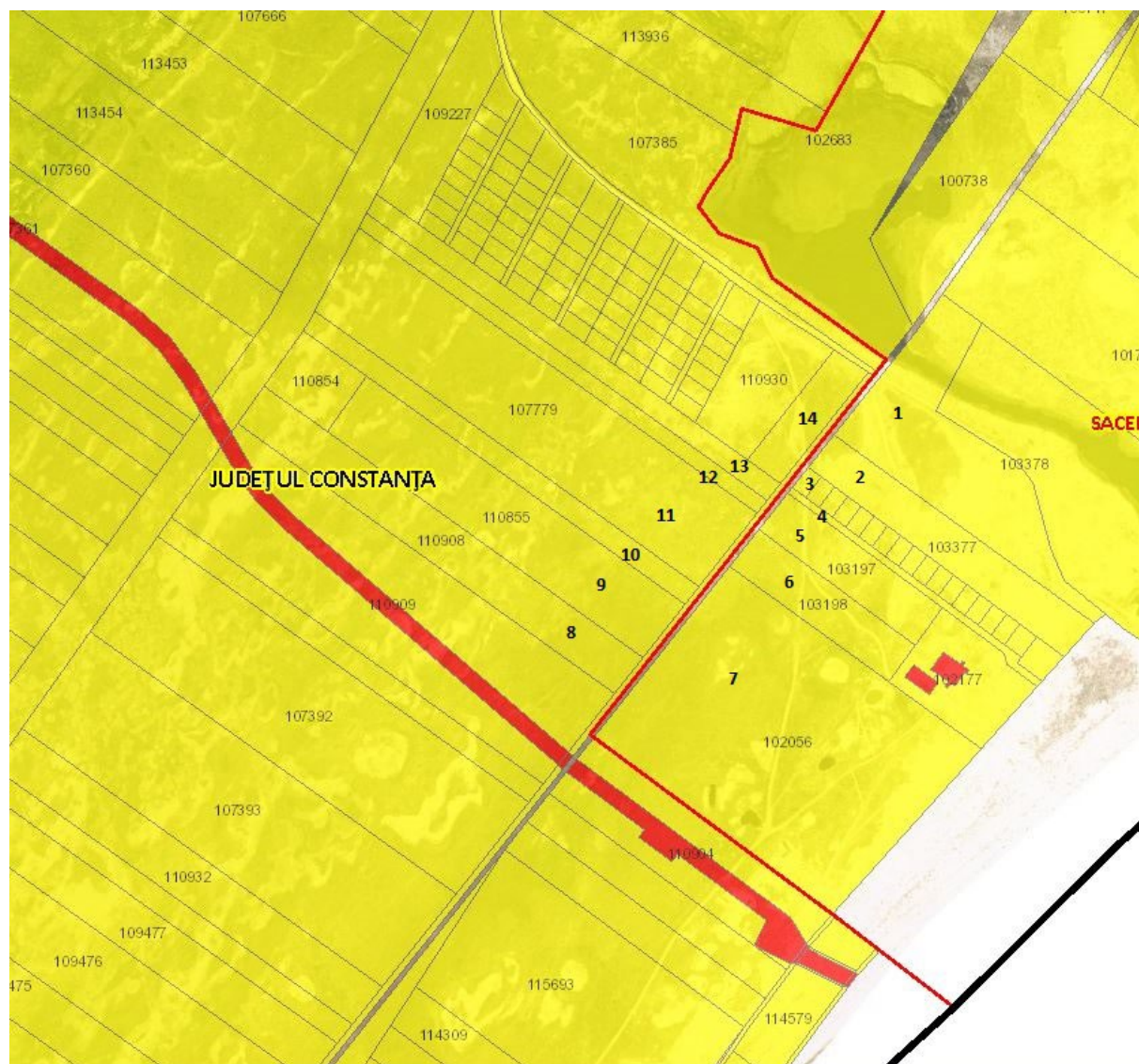
NO. CRT.	CADASTRAL NUMBER	NOTE
1	109087	COM. CORBU
2	107339	COM. CORBU BSOG RIGHT OF WAY ARGENTA SITE ACCESS ROAD
3	110216	COM. CORBU
4	110215	COM. CORBU
5	109742	ANAF MORTGAGE RIGHT OF USE OCTOGON STUDIO SRL
6	107333	COM. CORBU
7	107334	COM. CORBU
8	107336	COM. CORBU



HDD Access Neighbors

NO. CRT.	CADASTRAL NUMBER	NOTE
1	103378	COM. SACELE
2	103377	COM. SACELE

3	102195	COM. SACELE
4	102196	COM. SACELE, ACCESS ROAD CHERHANA MORTGAGE
5	103197	COM. SACELE
6	103198	COM. SACELE
7	102056	COM. SACELE
8	110908	COM. CORBU
9	110855	COM. CORBU
10	107389	COM. CORBU
11	107779	COM. CORBU
12	107780	COM. CORBU
13	107387	COM. CORBU
14	110931	COM. CORBU



ANNEX 3 – Tourist monitoring performed by BSOG

Pictures taken by BSOG during the summer season in Vadu:





Tourist monitoring database:

Month	Date	Time	Name of observer	Company	No. of tourists	Type of accommodation	Proximity to project area
July	15.07.2020 Wednesday	14:30	AM Pericleanu	BSOG	15	5 trailers	30 m
July	16.07.2020 Thursday	14:40	AM Pericleanu	BSOG	15	5 trailers	30 m
July	17.07.2020 Friday	13:20	AM Pericleanu	BSOG	20	5 trailers, 2 cars	20 m
July	22.07.2020 Wednesday	12:39	D Stroe	BSOG	10	3 trailers	40 m
July	27.07.2020 Monday	17:20	B Tadio	BSOG	9	3 trailers	30 m
July	28.07.2020 Tuesday	14:20	B Tadio	BSOG	12	2 trailers, 2 cars	30 m
July	29.07.2020 Wednesday	15:30	B Tadio	BSOG	21	1 trailer, 6 cars	50 m
July	30.07.2020 Thursday	16:30	B Tadio	BSOG	18	1 trailer, 5 cars	50 m
August	03.08.2020 Monday	15:30	B Tadio	BSOG	24	6 trailer, 2 cars	50 m

August	04.08.2020 Tuesday	15:00	B Tadio	BSOG	30	5 trailer, 5 cars	50 m
August	05.08.2020 Wednesday	13:30	B Tadio	BSOG	36	5 trailer, 7 cars	50 m
August	06.08.2020 Thursday	14:00	AM Pericleanu	BSOG	25	3 trailers, 3 cars	50 m
August	07.08.2020 Friday	11:30	AM Pericleanu	BSOG	40	3 trailers, 6 cars	50 m
August	10.08.2020 Monday	18:00	B Tadio	BSOG	20	2 trailers, 7 tents	50 m
August	11.08.2020 Tuesday	16:30	B Tadio	BSOG	20	2 trailers, 7 tents	50 m
August	12.08.2020 Wednesday	19:19	B Tadio	BSOG	12	6 tents	50 m
August	13.08.2020 Thursday	17:26	B Tadio	BSOG	12	6 tents	50 m
August	17.08.2020 Monday	18:05	B Tadio	BSOG	20	4 trailers, 3 tents	50 m
August	18.08.2020 Tuesday	16:39	B Tadio	BSOG		4 trailers, 4 tents	50 m
August	20.08.2020 Thursday	18:20	B Tadio	BSOG	12	1 trailer, 4 tents	50 m
August	21.08.2020 Friday	17:05	B Tadio	BSOG	17	1 trailer, 7 tents	50 m
August	24.08.2020 Monday	19:48	B Tadio	BSOG	6	3 tents	100 m
August	25.08.2020 Tuesday	17:47	B Tadio	BSOG	4	2 tents	100 m
August	26.08.2020 Wednesday	17:42	B Tadio	BSOG	6	3 tents	100 m
August	28.08.2020 Friday	15:02	B Tadio	BSOG	15	3 tents, 3 trailers	100 m
August	31.08.2020 Monday	15:36	B Tadio	BSOG	10	2 trailers, 2 tents	100 m
September	04.09.2020 Friday	15:55	B Tadio	BSOG	5	1 trailer, 1 tent	100 m
September	07.09.2020 Monday	17:41	B Tadio	BSOG	10	2 trailers, 2 tents	100 m
September	08.09.2020 Tuesday	17:20	B Tadio	BSOG	12	4 trailers	100 m
September	09.09.2020 Wednesday	17:20	B Tadio	BSOG	15	5 trailers	100 m
September	11.09.2020 Friday	18:06	B Tadio	BSOG	3	1 trailer	100 m
September	14.09.2020 Monday	18:44	B Tadio	BSOG	3	1 trailer	100 m
September	19.09.2020 Saturday	18:32	B Tadio	BSOG	2	1 tent	100 m
September	21.09.2020 Monday	17:43	B Tadio	BSOG	0	No tents or trailers	100 m

ANNEX 4 – Stakeholder Engagement Activities and Media Monitoring

Vadu beach survey example:

~~16~~/07/2020

VADU BEACH SURVEY

The people located on the beach next to the HDD construction site were interviewed.

People were chosen at random, based on the availability we considered they had to answer our questions.

Questions:

How many people came?

What locality did they come from?

How long did they intend to stay at Vadu?

Are they bothered by the presence of the site in the area they chose for sunbathing?

Do they know the reason for the constructions in that area?

Answers:

1. 4 adults and 2 children, from Bucharest, came to the seaside for 7 days. They read the sign on the construction site. They were told by another "smarter" person on the beach that the gases that will be extracted from the sea are not for Romania. They would prefer Romania to have a benefit from this.

2. 5 people (with two caravans) from Bucharest, come to the seaside for 7 days. They noticed the site, but they don't mind its presence. They are interested in how the pipeline will reach the sea, which is why they are told about the underpass technique.

3. 7 people, from Bacau and Iasi, come to the seaside for 4-5 days. They were not bothered by the presence of the site. He hopes that the extraction of gas from the Black Sea will be a benefit for Romania.

4. 3 adults and a child, from Bucharest, have been at the seaside for two months (they have an apartment in Mamaia Nord and do not stay overnight in Vadu). They are not bothered by the presence of the site. They were surprised to find out about the method of crossing. They believed that the work would take place with an open ditch.

5. 4 adults and 3 children, from Bucharest, came to the seaside for a week. They arrived on Thursday, the day of the interview. They had not noticed the site, but they are not bothered by it.

The interviewees stated that, in addition to the fact that they were not disturbed by the presence of the site, they did not perceive any annoying noises from the site, products of machinery or workers.

All interviewees received the information leaflet about the beach crossing and were given additional details about the crossing procedure or other information they needed.

Elena Cretu - Community Liaison Officer

Info flyer for PAPs:

CINE SUNTEM

Black Sea Oil & Gas (BSOG)
Suntem o companie de petrol și gaze cu sediul în România, deținută de fondul de investiții Carlyle International Energy Partners și Banca Europeană pentru Reconstrucție și Dezvoltare. Desfășurăm operațiuni de explorare, dezvoltare și exploatare a resurselor de petrol și gaze naturale.
Toate operațiunile noastre sunt desfășurate în condiții responsabile și de maximă siguranță. Respectăm toate cerințele legale, precum și cele mai bune practici în domeniu și standardele cele mai ridicate de protecție a mediului. Pe întreaga durată a proiectului vom analiza și vom ține cont de toate aspectele sociale legate de acesta, atât la nivel local cât și național.
Siguranța și sănătatea angajaților și a contractivilor noștri precum și siguranța membrilor comunității din Corbu și Vadu sunt foarte importante pentru noi.

Aspecte cheie:



PROIECTUL DE DEZVOLTARE GAZE NATURALE MIDIA MGD

Proiectul MGD este primul proiect de acest tip construit după anul 1989 în România.
Gazele naturale extrase, provenite din zăcămintele Ana și Doina situate la aproximativ 120 km în largul Mării Negre, vor fi tratate în stația de tratare a gazelor de la Vadu și livrate în Sistemul Național de Transport al gazelor naturale.
Proiectul deține toate avizele și autorizațiile prevăzute de legislația în vigoare din România și se supune procedurii internaționale de evaluare a impactului social și de mediu (ESIA).

STADIILE PROIECTULUI



Respectăm toate prevederile din autorizația de construire și din întreaga documentație de autorizare (inclusiv avize și acorduri specifice) precum și cerințele suplimentare prevăzute în legislația aplicabilă.

*Proiectul ultimului grafic de activități realizat pe baza estimărilor constructorilor noștri.

BENEFICIILE PENTRU ROMÂNIA

- Acoperă 10% din necesarul de gaze al României în faza 1;
- Impozite și redevențe substanțiale plătită statului român;
- Contribuie la securitatea energetică a României;
- Susține infrastructura națională de transport a gazelor naturale;
- Creează noi oportunități pentru furnizorii de servicii din România;
- Asigură accesul la tehnologie de ultimă generație.

BENEFICIILE PENTRU COMUNITATEA DIN CORBU

- Oportunități pentru antreprenorii locali în timpul și după implementarea proiectului (de la cazare, restaurante și magazine alimentare);
- Ne vom asigura de faptul că infrastructura locală nu va fi afectată de proiectul nostru, iar în cazul în care va fi necesar, o vom îmbunătăți;
- Dezvoltăm programe de implicare socială în comunitate;
- Sprijinim comunitatea locală în demersul de conectare la rețeaua de distribuție a gazelor naturale.



MEDIU

Calitatea aerului

- Verificăm constant calitatea aerului pentru a ne asigura că nu se depășesc normele admise legal;
- Avem cele mai moderne echipamente pentru reducerea emisiilor și a poluării aerului.

Calitatea apei și a solului

- Am implementat un plan pentru prevenirea și reducerea poluării și supraveghem în permanență lucrările de construire pentru a ne asigura că acestea este implementat;
- Toate suprafețele afectate de lucrările de construire vor fi readuse la stadiul în care s-au aflat înainte de începerea proiectului (cu excepția suprafeței ocupate de stația de tratare a gazelor).

Biodiversitate

- Utilizăm tehnici moderne (inclusiv foraj orizontal dirijat) pentru instalarea conductelor de gaze astfel încât să evităm lucrările deschise în zona plajei și a arilor cu habitate protejate.

Peisaj

- Stația de tratare a gazelor va fi împrejmuită de copaci, pentru a permite integrarea cât mai bună a acestora în peisajul zonei.

Zgomot și vibrații

- Nivelul de zgomot nu va fi ridicat în timpul lucrărilor de construire;
- După ce stația va fi funcțională, vom lua toate măsurile necesare pentru a minimiza zgomotul. Echipamentele vor fi dotate cu sisteme de atenuare a zgomotului și vom instala panouri fonoizolante acolo unde este necesar;
- Vehiculele pentru transport vor fi certificate de către autoritatea competentă (ARR).

SOCIAL

Transport

- Transportul materialelor se va desfășura doar în timpul zilei;
- Vom aplica și respecta restricțiile de viteză conform cerințelor legale;
- Vom asigura semnale de trafic și marcaje de drum adecvate, conform cerințelor legale;
- Vom programa transportul echipamentelor astfel încât acesta să nu se suprapună cu intervalele orare în care se deplasează copii spre/de la școală;
- Vom comunica cu autoritățile locale înainte să efectuăm transportul echipamentelor de tonaj ridicat.

Cazare muncitori

- Muncitorii care vor lucra în faza de construire de pe tarm vor fi cazați în pensiunile din localitate, fie vor face naveta din localitățile din împrejurimi;
- Muncitorii vor fi instruiți să aibă un comportament civilizat.

Turism

- Trecerea conductei pe sub plajă se va face folosind o tehnică modernă de foraj, plaja nefiind astfel afectată fizic în acest proces.

Pescuit

- Impactul lucrărilor asupra pescuitului pe traseul conductei va fi minor și de scurtă durată.

Folosirea terenurilor


- Terenurile necesare proiectului sunt în proprietatea BSOG;
- După finalizarea lucrărilor de construire niciun teren nu va fi îngrădit, cu excepția stației de tratare a gazelor.

Brochure distribution database sample




Nr	Data	Pliant	Zona	Bucati	Distributor
1	02.07.2020	Brosura MGE	Vadu - magazinele: "La Beț	30	Elena Cretu
2		Flyer CLO	Vadu - str. V. Alexandrescu, Scolii		Elena Cretu
3	03.07.2020	Brosura MGE	Vadu - cetateni intalniti pe	10	Elena Cretu
4		Flyer CLO	Vadu - str. Pescarilor, Biser	Total - 175	Elena Cretu
5	11.07.2020	Brosura MGE	Vadu - completat la magaz	20	Elena Cretu
6		Flyer CLO	Vadu - distribuit pe strazile	45	Elena Cretu
7		Flyer QA	Vadu - toate casele si pen: ??		Elena Cretu
8		Brosura HDD	Vadu - toate pensiunile si	48	Elena Cretu
9	16.07.2020	Brosura HDD	Vadu - plaja - toti turistii al aprox. 7		Elena Cretu si Ana Pericleanu
10		Brosura HDD	Vadu - in cutia amplasata g	5	Elena Cretu si Ana Pericleanu
11		Brosura HDD	Vadu - cherhana Bosoanca	10	Elena Cretu si Ana Pericleanu
12	17.07.2020	Flyer QA	Vadu - strada Pescarilor (ra ??		Elena Cretu
13		Flyer QA	Vadu - adaugat la magazin	20	Elena Cretu
14		Brosura MGE	Vadu - strada Pescarilor, l.	150	Elena Cretu
15		Verificat cutii sugestii si reclamatii		CC - Vadu = 0, CC Corbu = 0, Primarie = 0	
16	21.07.2020	Brosura MGE	Vadu - Strazile: M. Emines	30	Elena Cretu
17	25.07.2020	Brosura MGE	Vadu - Ogorului si Liliaculu	20	Elena Cretu
18		Verificat cutii sugestii si reclamatii		CC - Vadu = 0, CC Corbu = 0, Primarie = 0	
19	27.07.2020	Brosura MGE	Corbu - zona de blocuri si c	50	Elena Cretu
20		Flyer QA	Corbu - zona de blocuri si c	50	Elena Cretu
21		Flyer CLO	Corbu - zona de blocuri si c	50	Elena Cretu

BSOG LinkedIn post:

Posted by Ana-Maria Pericleanu • 7/22/2020


Black Sea Oil & Gas SA
 9,274 followers
 2w • Edited •

Getting ready for one of the most exciting milestones in the [#MGDproject](#) execution so far: [#undercrossing](#) the beach to start laying the onshore pipeline. The technology we chose to under cross the beach, [#HDD](#), is a newer or ...see more






296 • 5 Comments

Like Comment

Add a comment...


Most Relevant


Sten Schmidt • 1st
 Consultant - Sr. Pipeline Engineer at A/S Norske Shell

2w ...

woohoo 🎉🚚

1 Like


Patrick Haines • 3rd+
 Health & Safety Advisor at VolkerStevin

2w ...

Stefan, is this where we did the seismic with Shark ???

România, cu un pas mai aproape de independența energetică. A început construcția unei conducte la Vadu

17-09-2020 18:27

Autor: [Stirileprotv](#)

În mai puțin de un an, România și-ar putea asigura din propria producție tot gazul de care are nevoie.

Două companii, una americană și una românească, au început astăzi construcția unei conducte la Vadu, în județul Constanța, care va transporta gazele extrase din adâncurile Mării Negre. Instalația va transporta pe țărm o cantitate anuală care ne va aduce mai aproape de independența față de gazul rusesc, spun oficialii guvernului.

Conducta de 500 de milioane dolari pornește din zona plajei Vadu și ajunge în largul Mării Negre. De aici va capta gazele din zăcămintul Midia.

Pe sub mare, va parcurge o distanță de 120 de kilometri și, când va fi gata, va putea aduce 1 miliard de metri cubi de gaze pe an. Asta înseamnă 10% din consumul României, spun reprezentanții companiilor investitoare.

Gabriel Comănescu, directorul companiei de foraj: „România are șanse majore să oprească importurile pe gaze și să-și poată folosi banii pe care îi scoate din țară pentru alte investiții”.

ANNEX 5 – Interview with the owner of the beach restaurant in Vadu – Minutes of the Meeting

Date: 26.02.2021

Time: 10.00 a.m. (GMT+2)

Location: phone interview

Participants: Vlad Muresan (Green Partners), Restaurant owner

Topics discussed:

1. Scope of the report

- the interview started with a small presentation about the role and scope of the LRR
- the interviewee was open about participating in the interview, though he questioned the usefulness of the report, now that the work for the project is almost completed

2. COVID impacts on tourism in Vadu

- in the 2020 tourist season the restaurant has opened on the 1st of June and has functioned until the 15th of September
- the COVID imposed restrictions limited the activity of the restaurant, which usually opens on the 1st of May
- the owner has also claimed that due to the COVID restrictions, fewer customers were present in the 2020 season than in the previous year

3. Project impact on the restaurant

- the owner of the restaurant has not been satisfied with his communication with BSOG, although he has admitted that he was informed and consulted about the project, and that BSOG has been in constant contact with the restaurant throughout the construction period through direct meetings and flyer distribution
- The restaurant owner could not identify a main contact person from BSOG and has stated that the persons he has been in contact most frequently from BSOG were workers from the HDD site

- the owner talked about the attempt of BSOG to contract him to cater for the workers at the HDD site, yet an agreement could not be reached. The restaurant owner claimed that it would not have been advantageous for him to sell his food at “canteen” prices to the workers
- The restaurant owner has also complained about the noise that the HDD operation was generating at night, and about the road rehabilitation, though it was not clear what was his grievance regarding the road, as he couldn’t articulate what was the damage to his operation
- The restaurant owner has also claimed that the HDD operation has affected the well which he utilizes for water for the restaurant. He claims that he has taken samples from the well, which he then sent to a lab to be tested and which confirmed that the water is tainted. When asked if he then proceeded to make a formal complaint to BSOG, he answered that he didn’t because he doesn’t need anything from BSOG
- The restaurant owner is aware that a grievance mechanism was in place in Vadu and that he could submit his grievances either in the grievance box near the HDD site or by contacting a BSOG representative, yet he again reiterated the fact that he doesn’t want anything to do with BSOG

Annex 6 – Interviews with PAPs during the February 2022 site visit

Minutes of the meeting - Corbu Town Hall

Date: 15.02.2022

Location: Corbu Town Hall

Participants:

- Vasile Lumînare – Corbu Mayor
- Constantin Vilau – Corbu Counselor
- Ana-Maria Pericleanu – BSOG
- Cristina Rus – Green Partners
- Vlad Muresan – Green Partners

Meeting scope:

- The meeting was organized as part of the field visit organized for the finalizing of the LRR (Livelihood Restoration Report) and the update to the SEP (Stakeholder Engagement Plan)
- The goal of the meeting was to assess the impacts of the MGD Project on the Corbu community as well as the perception of the community towards the project

Topics discussed:

- **Traffic:** the officials have confirmed once again that there was no significant impact due to the increase in heavy traffic within the community. No complaints have been received by the Town Hall regarding this topic and no congestions or other issues have been identified by the local authorities
- **Infrastructure:** the road towards Vadu beach is in need of rehabilitation and has been further impacted by the heavy traffic associated with the project. BSOG has made a commitment to support the rehabilitation of the road. The local authorities have started the process of accessing funds for the rehabilitation of the road through the Anghel Saligny National Investment Programme.
- **Tourism:** no impacts on tourism has been identified in relation to the project activities. The local authorities have stressed the fact that the last tourist season has been a fruitful one for the community, as more tourists have decided to spend their vacation within Romanian borders, due to the COVID travel restrictions and uncertainties.
- **Access to gas:** ever since the project has been announced there has been an expectation within the community that it will facilitate the access to gas for the households. The Mayor has stressed the fact that they have encountered an example of a commune that has

managed to access the gas infrastructure directly from the gas transmission pipeline, through a pressure reduction station, and has requested BSOG's assistance in investigating this potential solution.

- **BSOG CSR activities:** The Mayor and his Counselor has spoken highly of the school programme financed by BSOG as part of the CSR activities. The Counselor has participated in the dissemination event organized as part of the programme and has praised the positive impact of the activities on the local community.
- **Relationship with BSOG:** The local authorities have highlighted the positive relationship with BSOG and do not have any particular complaints towards the company.

Minutes of the meeting - Milexim

Date: 15.02.2022

Location: Vadu Beach

Participants:

- Gabi Milea – Milexim Owner
- Ana-Maria Pericleanu – BSOG
- Cristina Rus – Green Partners
- Vlad Muresan – Green Partners

Meeting scope:

- The meeting was organized as part of the field visit organized for the finalizing of the LRR (Livelihood Restoration Report) and the update to the SEP (Stakeholder Engagement Plan)
- The goal of the meeting was to assess the impacts of the MGD Project on the reed harvesting operations of Milexim and to follow up on the conflict between Milexim and DDBRA

Topics discussed:

- **Impacts:** due to the pipeline construction operation, Milexim has not been able to harvest all the reed crops that have been promised by the concession agreement with DDBRA. While part of the affected crops are located on BSOG owned property, the company has also not been able to reach a part of the concession that is not situated on BSOG property but which has been obstructed by the pipeline corridor. More so, the owner of the company has stressed that the past year, 2021, has offered a lower yield than expected due to the weather conditions. The owner has previously submitted a letter with the estimated impacts and their monetary value to BSOG.

- **Relationship with BSOG:** a representative from BSOG has contacted the owner in order to resolve the issue regarding the access to the land and has explained that the issue was a result of a miscommunication with DDBRA which has made a concession on BSOG own land that they were aware that was part of the MGD project. An evaluator appointed by the Ministry of Economy, as per the Offshore Law, was supposed to visit the site and perform an evaluation of the damages, but at the time of the visit the evaluation has yet to be performed. The owner is expecting BSOG to follow up and offer support in resolving the situation with DDBRA.

Minutes of the meeting – Bosoanca restaurant

Date: 16.02.2022

Location: via telephone

Participants:

- Vasile Bosoanca – Restaurant Owner
- Vlad Muresan – Green Partners

Meeting scope:

- The meeting was organized as part of the field visit organized for the finalizing of the LRR (Livelihood Restoration Report) and the update to the SEP (Stakeholder Engagement Plan)
- The goal of the meeting was to assess the impacts of the MGD Project on the restaurant near Vadu beach as well as to follow up on the results of the discussion between BSOG and the restaurant owner

Topics discussed:

- **Relationship with BSOG:** BSOG has interacted on many occasions with the restaurant owner and other persons in charge. The last discussion between representatives from BSOG and the restaurant took place between them and Mario Bosoanca, Vasile's nephew. While Vasile Bosoanca has been a critic of the project since the beginning, he has highlighted that BSOG's engagement was pro-active and that they offered adequate information about the construction schedule.
- **Impacts:** Bosoanca has highlighted on many occasions that the project has impacted his restaurant, although he has never followed through with any of his claims, nor were they backed by his family when engaging with them. One of his claims was that the HDD works has impacted his well, but this was not confirmed by the rest of the family, nor did he want to work with BSOG in order to resolve this potential issue. During this

conversation he reiterated that his well was affected and that he will make a formal complaint to BSOG.

Minutes of the meeting – Moesia restaurant

Date: 16.02.2022

Location: via telephone

Participants:

- Denis Stamatescu – Moesia Owner
- Vlad Muresan – Green Partners

Meeting scope:

- The meeting was organized as part of the field visit organized for the finalizing of the LRR (Livelihood Restoration Report) and the update to the SEP (Stakeholder Engagement Plan)
- The goal of the meeting was to assess the impacts of the MGD Project on the Moesia restaurant near Vadu beach as well as to follow up on the results of the discussion between BSOG and the restaurant owner regarding the traffic impacts

Topics discussed:

- **Traffic:** the restaurant was disturbed by the heavy traffic in the area, related to the HDD works on Vadu beach. Their claim was that while trucks were passing the area, they would do so at inappropriate speeds, and this would in turn lead to dust being raised from the road and disturbing the clients. In this respect, a meeting was organized between the restaurant owner and BSOG representatives, in which it was agreed that stricter traffic rules will be enforced, and an effort will be made to limit the traffic in the area. The owner pointed out that since the meeting the traffic and the speed at which the trucks passed by have improved, yet there still was an occasional vehicle that did not respect the limitations.
- **Infrastructure:** the owner has complained about the poor condition of the road, as well as the fact that it was further affected by the project transport.